

# LIMIT SWITCH BOX - ALS Series



ALS 1X Series  
(Weather Proof, IP68)



ALS 3X Series  
(Explosion Proof, Exd II C T6, IP68)

## 1. Valve position Indicator

Limit switch box indicator offers clear location of the current valve position by 2 mechanical switches

## 2. "Quick-Set" Cam

The operating position of the switches can be easily changed by adjusting the high resolution spline cams manually and independently without the need for additional tools (cam closed-up, cam open-down)

## 3. Easy Wiring

ALS series are equipped with 2 standard conduit entries and 1 terminal strip with 8 point

## 4. Dual Wire Conduit

ALS10 : Dual 1/2" conduit entries

ALS30 : Dual 3/4" conduit entries

## 5. Captive Cover Bolts

Designed to be captured into the cover

## 6. Easy Mounting Bracket

Any actuator for rotary motion can be easily mounted.

NAMUR bracket supplied for easy mounting onto the actuator

## Ordering Number

Series	Area Classification	Switch Type
ALS	1 : Weather proof	0 : 2 SPDT
	3 : Explosion proof	1 : Proximity Sensor (PNP/NPN)
		2 : 3 SPDT
		3 : 4 SPDT
		4 : 2 DPDT (ALS 3X Series Only)

## Standard Materials of Construction

NAME	NO.	SPECIFICATION
Outer position indicator	1	PE
Inner Position indicator	1	ABS
Housing(Body, Cover)	2	Die-Casting Aluminum
Shaft(Stem)	1	303 Stainless Steel
Mechanical Switch	2	Used in UL CSA approved
Inserts(ALS3X)	1	Bronze
O-Ring	4	Nitrile (Rubber)
Cam	2	ABS
Spring	1	304 Stainless Steel
Cover Screws	4	304 Stainless Steel
Terminal Strip	1	Polyethylene

# LIMIT SWITCH BOX - ALS Series

## Specification

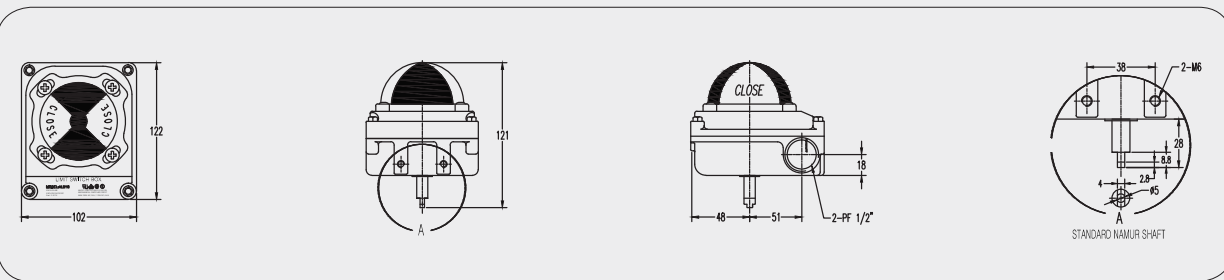
Description	Series	
Model	ALS 1X Series	ALS 3X Series
Ambient Temperature	-20°C to 185°C (-4°F to 185°F)	
Cable Entry Standard	2 x 1/2" PF/PT	2 x 3/4" PF/PT
Cable Entry Option	2 x 1/2" NPT/M20/PG13.5	2 x 3/4" NPT/M20/M25/PG13.5/PG16
Terminal Block Standard	8 Points	
Terminal Block Option	12 & 14 Points / Solenoid Valve Connection 14 Points	
Position indicator	0° to 90° (Red for Close / Yellow for Open)	
Painting	Polyester Powder Coating With Black Color	
Bracket	Steel / SUS	

## Certificate

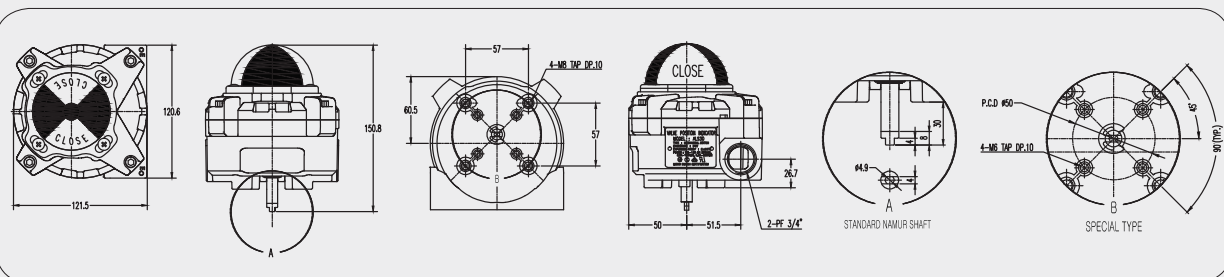
MARK	ALS 1X Series		ALS 3X Series	
	Ratings	Reg No.	Ratings	Reg No.
KTL	IP68	13-040252-01	IP68	13-054947-01
KOSHA			Exd II CT6	13-AV2B0-0752X
CE (TUV NORD)	Low-Voltage Directive 2006/95/EC	K3441/L10	Low-Voltage Directive 2006/95/EC	K3441 / L10
FM Approvals			XP/I/1/ABCD/T5 Ta=+85°C; I/1/AEx d II C/T5 Ta=+85°C; DIP/ II , III /1/EFG/T5 Ta =+85°C; IP67	3041064

## Dimension

### ALS10 Weather Proof







### ALS30 Explosion Proof



# LIMIT SWITCH BOX - ALS Series

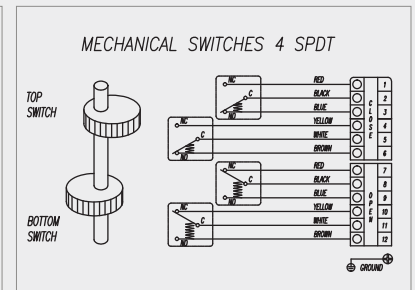
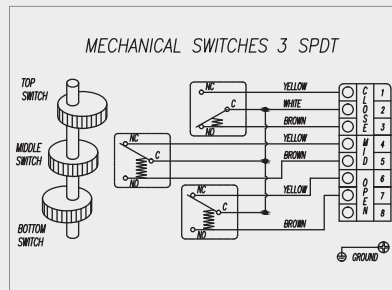
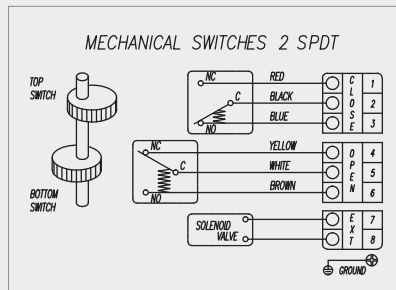
## Mounting bracket

1 NAMUR standard bracket is supplied together with 1 limit switch box as standard

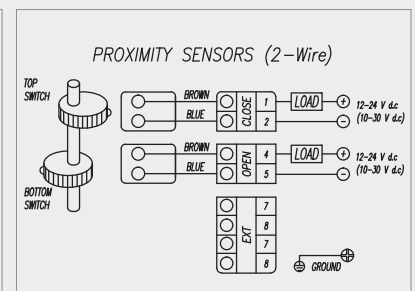
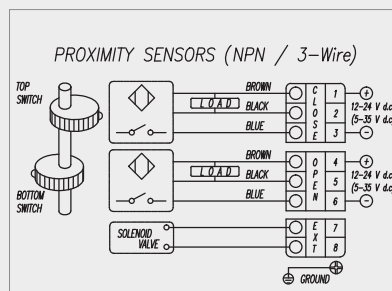
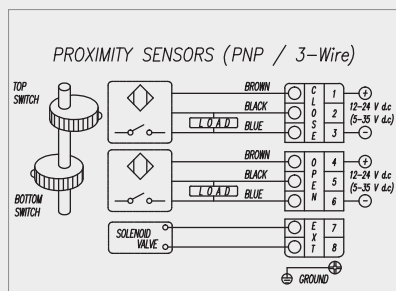
MODEL	BRACKET	Material	Actuator size	Model	Bracket	Material	Actuator size
	AB1 ALS 1X,3X Series	SUS	30 X80 H:20		AB3 ALS 1X,3X Series (For A40)	Steel	25 X 50 H:20
	AB2 ALS 1X,3X Series (For A200, 250)	SUS	30 X130 H:30		S1 ALS 1X Series	Steel	30 X 80 H:20~30

## Wiring Diagram

Mechanical Switch Type (UL CSA VDE Approved)



Proximity Sensor Type (UL CE Approved)



Mechanical Switch Type (UL CSA VDE Approved)

