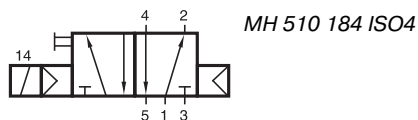
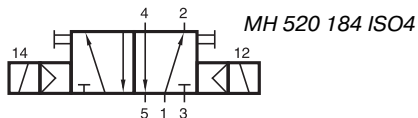


# ISO 4 Valves and Manifolds



MH 510 184 ISO4



MH 520 184 ISO4



ISO 4 Valves and Manifolds according to ISO 5599-1.

### MH 510 184 ISO4 :

5/2-way solenoid valve actuated by permanent signal and equipped with air spring return.

### MH 520 184 ISO4:

5/2-way double solenoid valve actuated by impulse. Position is kept until an electric signal is applied to the opposite side even when not attached to electrical source.

Valves are generally equipped with manual override.

### Manifolds:

Modular manifold system with all ports on the bottom (drawings on back page). Plates are designed for assemblage in control cabinets.

Common connection to port 1 (pressure), 3 (exhaust) and 5 (exhaust). The ports 2 and 4 of the individual valves are also located in the manifold plate. The system can be build up and taken apart by just opening two hexagon socket screws.

Additional stations can be added at any position and any time.

The system consist of:

End-plate right  
type R 5 184 K1 R

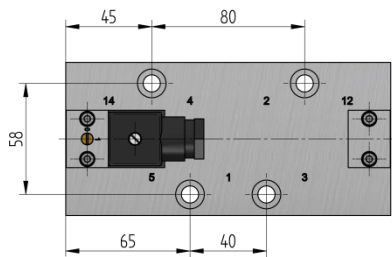
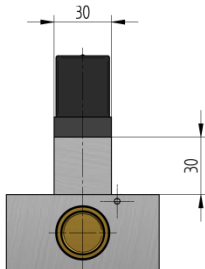
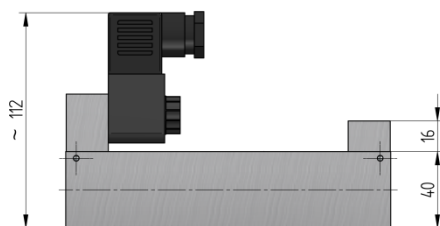
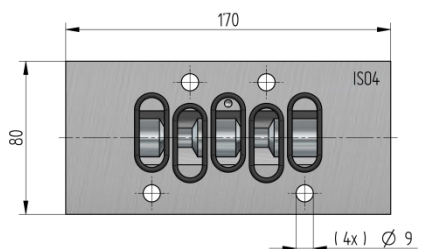
End-plate left  
type R 5 184 K1 L

Individual position  
type R 5 184 K1 ISO4  
type R 5 184 K2 ISO4

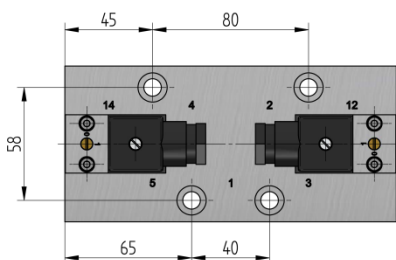
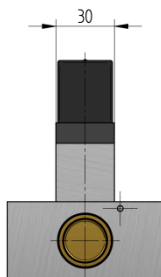
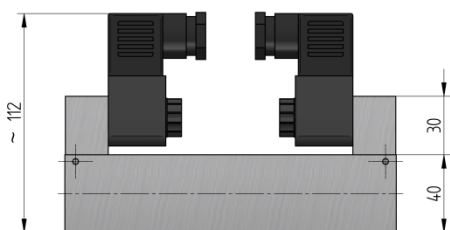
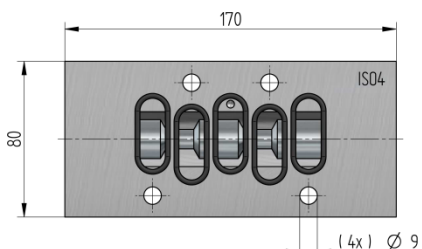
with G 1" ports  
with G 3/4" ports

Please note:

End-plates do not offer an individual valve-position.



### MH 510 184 ISO4

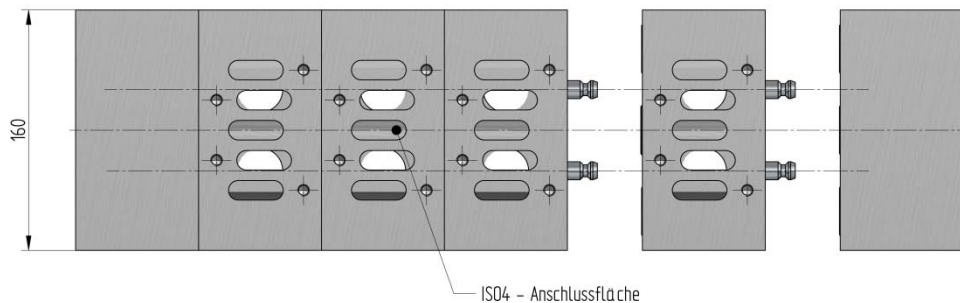
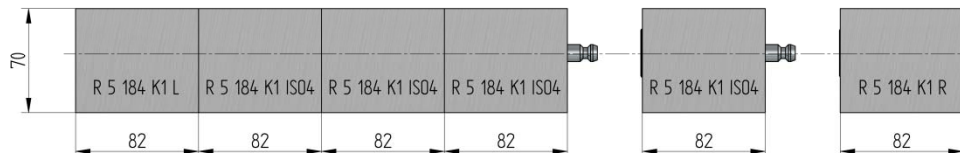
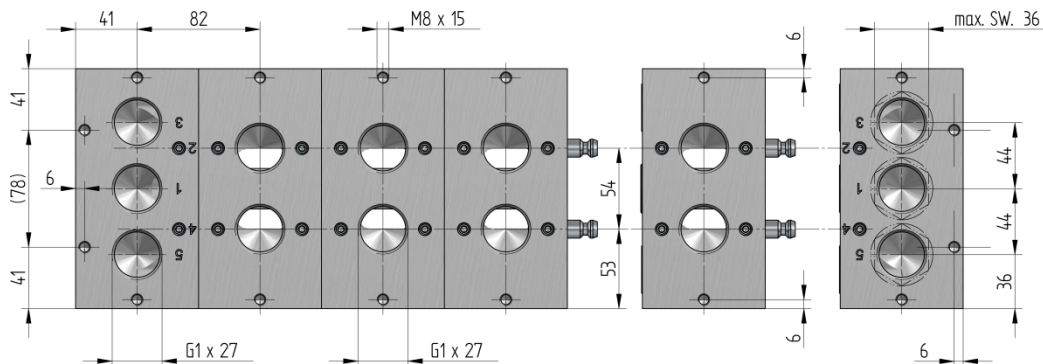


### MH 520 184 ISO 4

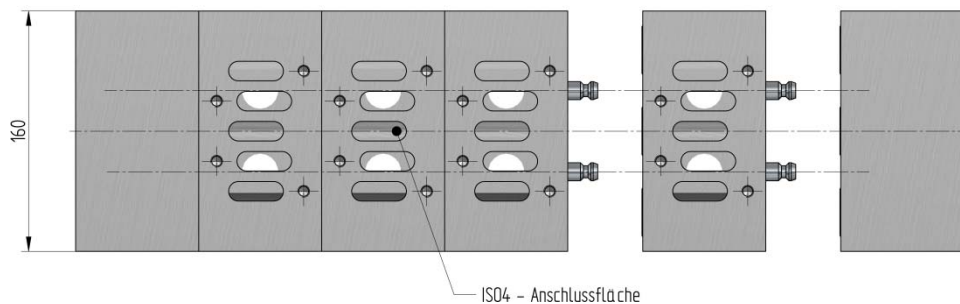
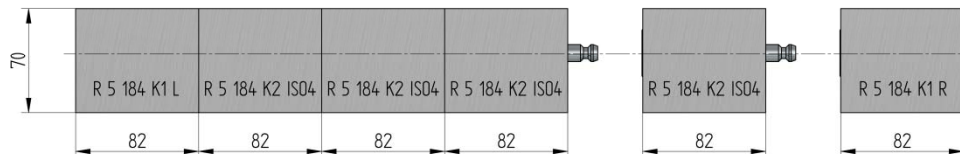
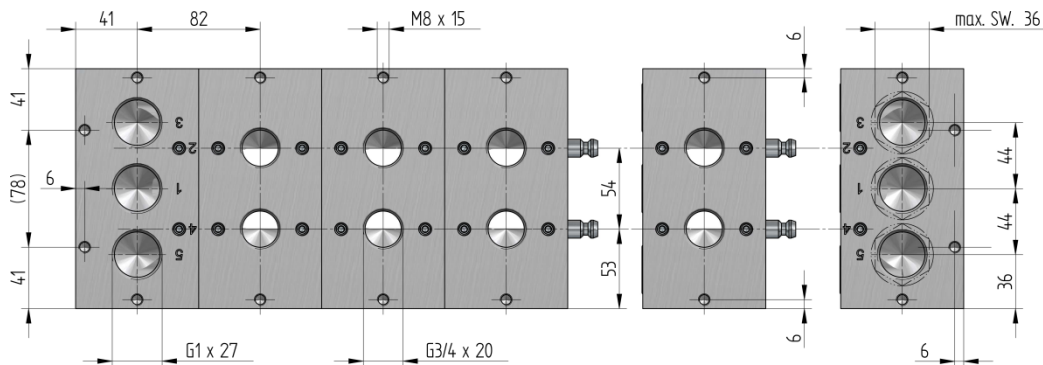
Type	Orifice size	Air flow	Operating press.
MH 510 184 ISO4	Ø 18 mm	6000 l/min	1 – 10 bar
MH 520 184 ISO4	Ø 18 mm	6000 l/min	1 – 10 bar



# ISO 4 Valves and Manifolds



**R 5 184 K1 ISO4 (G 3/4" ports)**



**R 5 184 K2 ISO4 (G1" ports)**