

Volume Booster VP1/VP11/VP12

Description

Volume Booster VP1 is one-to-one Signal to output supply Air, when used with a positioner/actuator, it is a control device to increase the stroking speed of control valves.

Features



VP1



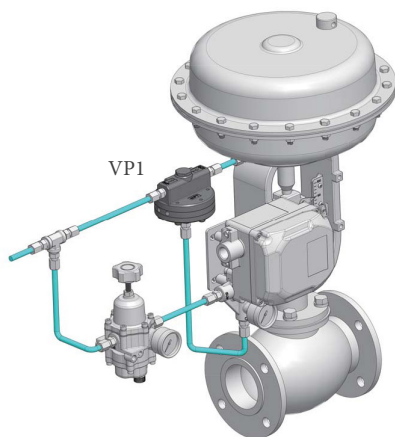
VP11



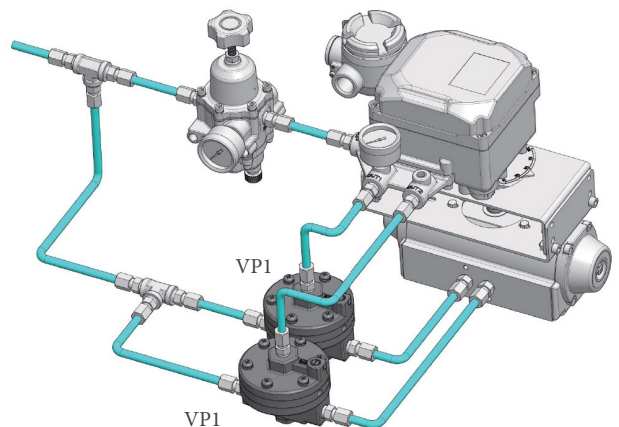
VP12

- Precise and fast response
- Soft seats provide tight shut off
- Adjustable Sensitivity
- Options available (High and Low temperature)
- Speed up valve regulation

Installation examples



Single actuator



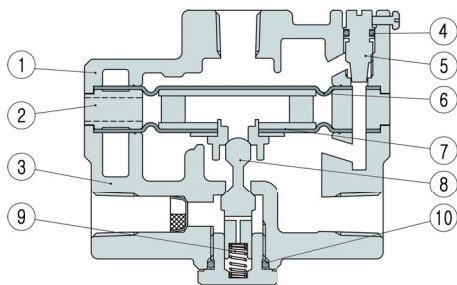
Double actuator

Volume Booster VP1/VP11/VP12

Specifications

Model		VP1	VP11	VP12
				
Max supply pressure		1MPa	1MPa	1MPa
Signal and output pressure		0.14~0.7MPa	0.14~0.7MPa	0.14~0.7MPa
Signal to output ratio		1:1	1:1	1:1
Linearity		1%	1%	1%
Flow capacity (CV)	Exhaust	1.3	2.1	5.2
	Output	1.2	2.7	4.9
Signal port		NPT1/4	NPT1/4	NPT1/4
Supply / Output port		NPT1/4	NPT1/2	NPT3/4
Ambient temperature	Standard type	-20°C~70°C	-20°C~70°C	-20°C~70°C
	High Temp.	-20°C~120°C	-20°C~120°C	-20°C~120°C
	Low Temp.	-40°C~70°C	-40°C~70°C	-40°C~70°C
Material		Aluminum die cast	Aluminum die cast	Aluminum die cast
Weight		0.55kg	0.75kg	1.9kg

Materials of construction



No.	Title	Material	No.	Title	Material
1	Cover	ALDC12	6	Diaphragm upper	NBR
2	Ring exhaust	ALDC12	7	Ass'y diaphragm	AL/NBR
3	Body	ALDC12	8	Poppet	STS
4	O-ring	NBR	9	Spring seat	STS
5	Adjust screw	STS	10	O-ring	NBR

Product code

Model			
Supply / Output port	1/4"	VP1	N
	1/2"	VP11	
	3/4"	VP12	
Air connection type	NPT		N
Ambient temperature	-20°C~70°C		S